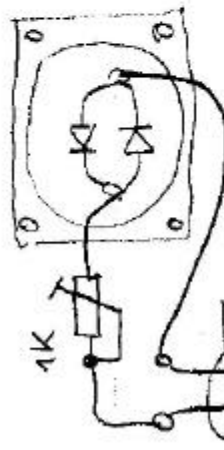
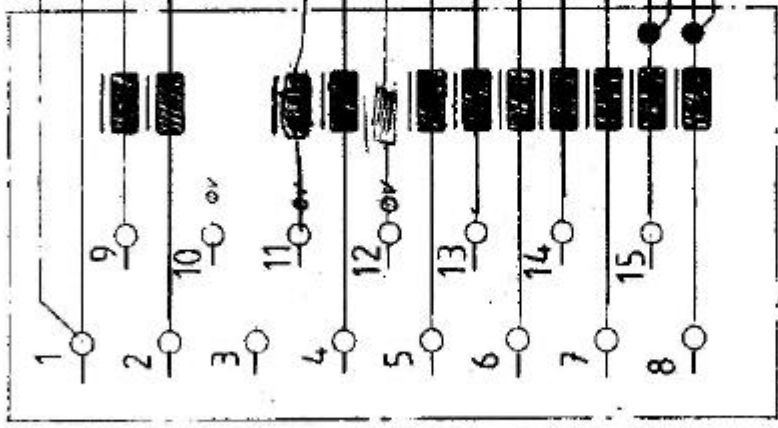


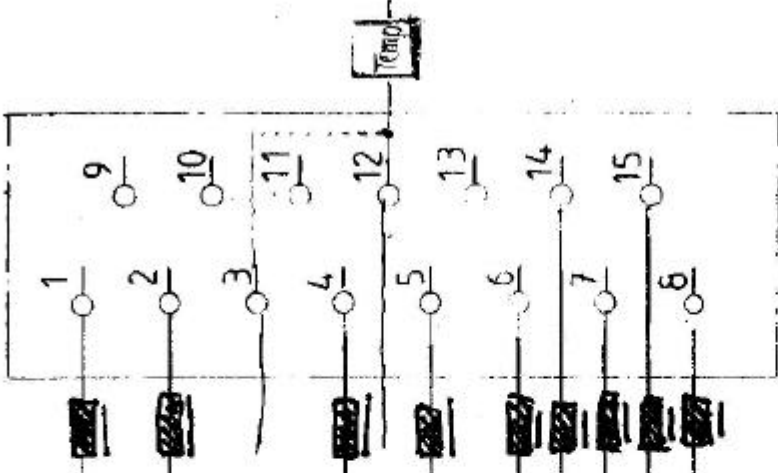
SG-Anzeige



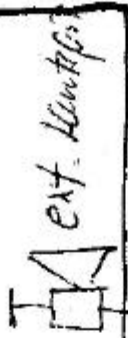
Variometer VW 910



Rechner VW 920



blau 0V
rot +12V
schwarz -9V
violett UEGes
weiß UEkin
rosa Um
braun-Uv
grün USG
gelb SG-Sch.



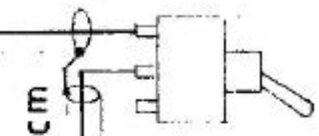
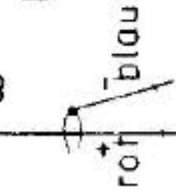
grau
grau rosa

rot blau

200 cm
80 cm

40 cm
7 cm

Flachsteckhülse
5 mm



2.-Anzeige*) Batterie
12V

Sollfahrleitung*) 160 cm

WK-Schalter

SG-Schalter

*) nur für Wölbklappen-
Flugzeuge

*) nur für Doppelsitzer

VW 910 ↔ VW 920

Kabelsatz
Steckerbelegung